

Treatment patterns and survival outcomes for metastatic castration sensitive prostate cancer: real world evidence from five different European countries

Ahmed H. Zedan
MD, Postdoc Associate
Department of Oncology, Vejle Hospital, Denmark

On behalf of the Uro-oncology Team

Leadership Advisory Board, IDEAL4RWE



Overview



01

Background

A brief introduction

02

Study objectives

Research questions

03

Collaborations

Sites and countries

04

Study design

Patient cohort
Study setting
Data analysis

05

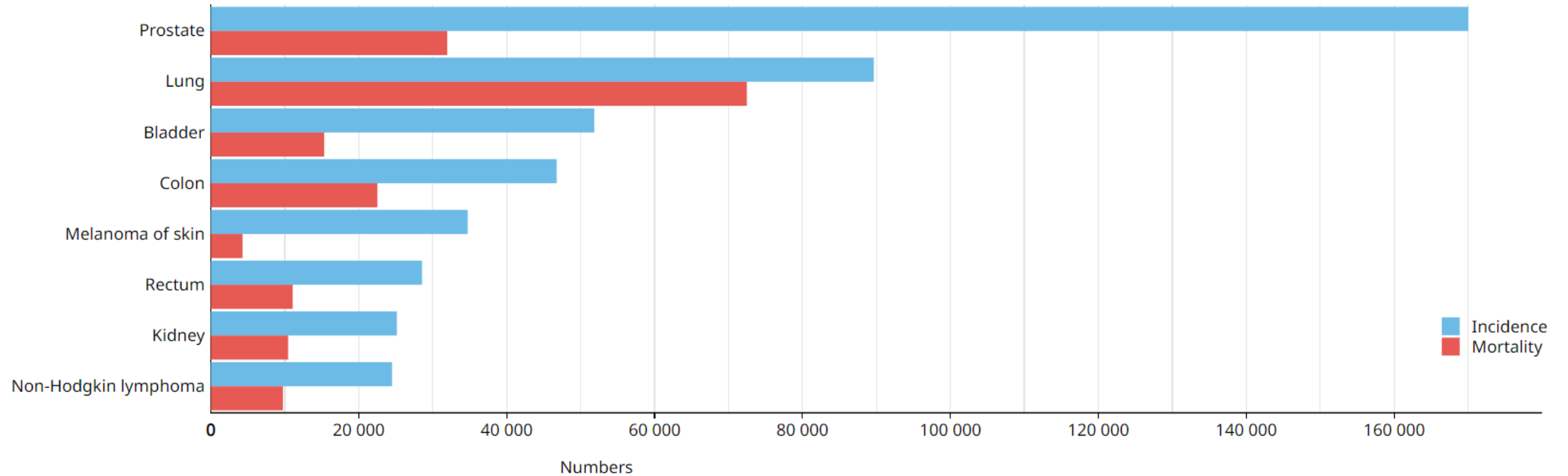
Study plan

Milestones

1. Background



Estimated number of incident cases and deaths Western Europe, males, all ages (excl. NMSC)

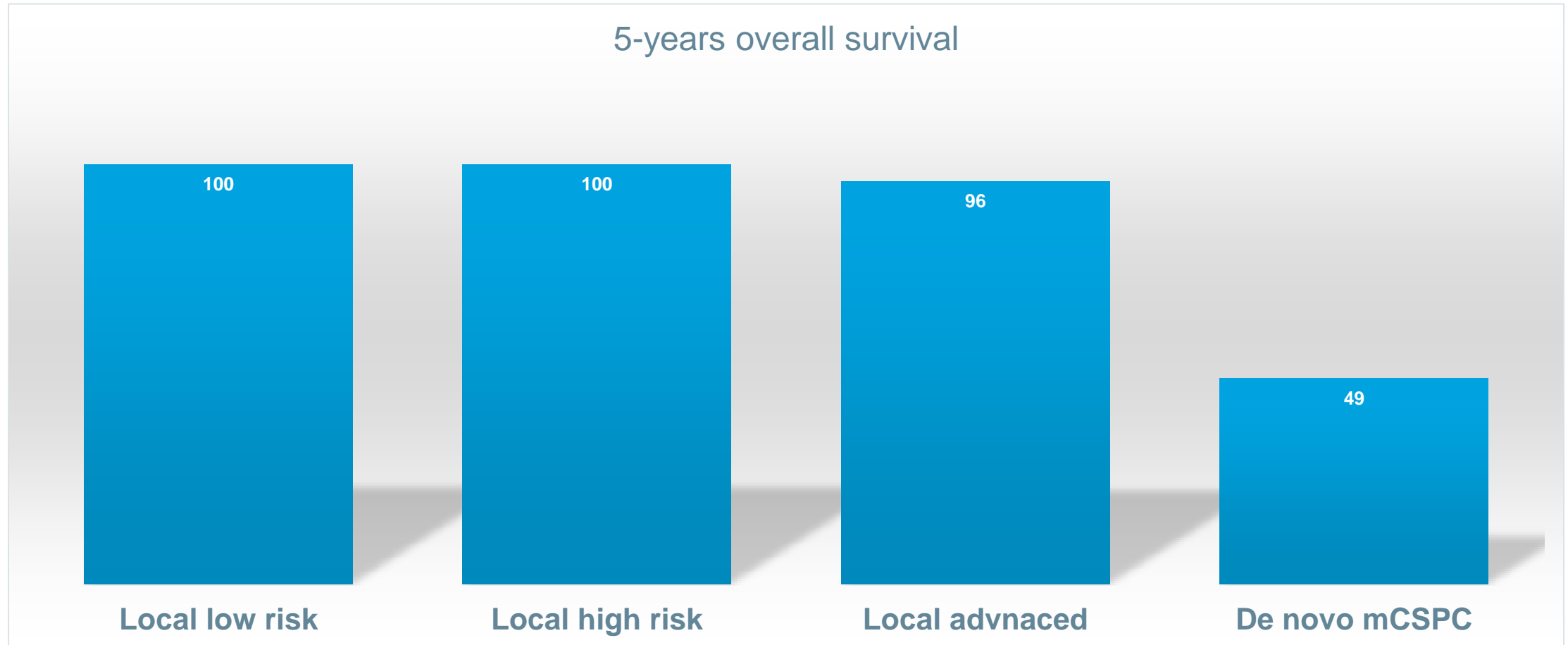


Data source: GLOBOCAN 2020
Graph production: Global Cancer Observatory (<http://gco.iarc.fr/>)
© International Agency for Research on Cancer 2022



Cancer Today - IARC, 150 Cours Albert Thomas, 69372 Lyon CEDEX 08, France - Tel: +33 (0)4 72 73 84 85 - powered by GLOBOCAN 2020

1. Background *(cont'd)*



Office for National Statistics, [Cancer survival by stage at diagnosis for England\(link is external\)](#), 2019.

1. Background *(cont'd)*



Already
6
Approved

About
15
New therapies

Almost
30
Month survival benefit

More than
60
Ongoing clinical trial

1. Background *(cont'd)*



RCT

- Design
- Evidence solidity
- Close monitoring
- Regulations/rules

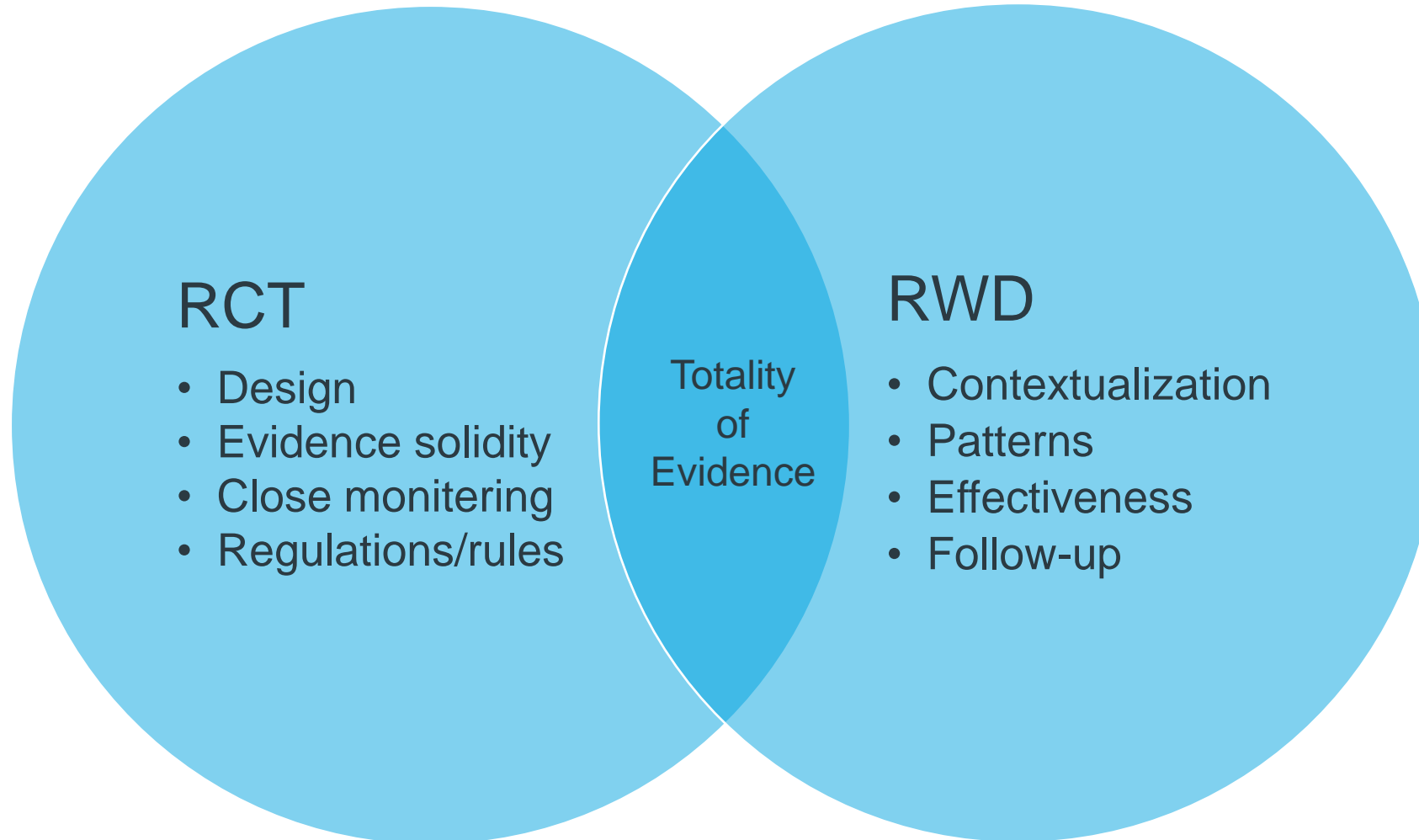
1. Background *(cont'd)*



RWD

- Contextualization
- Patterns
- Effectiveness
- Follow-up

1. Background *(cont'd)*



2. Study objectives

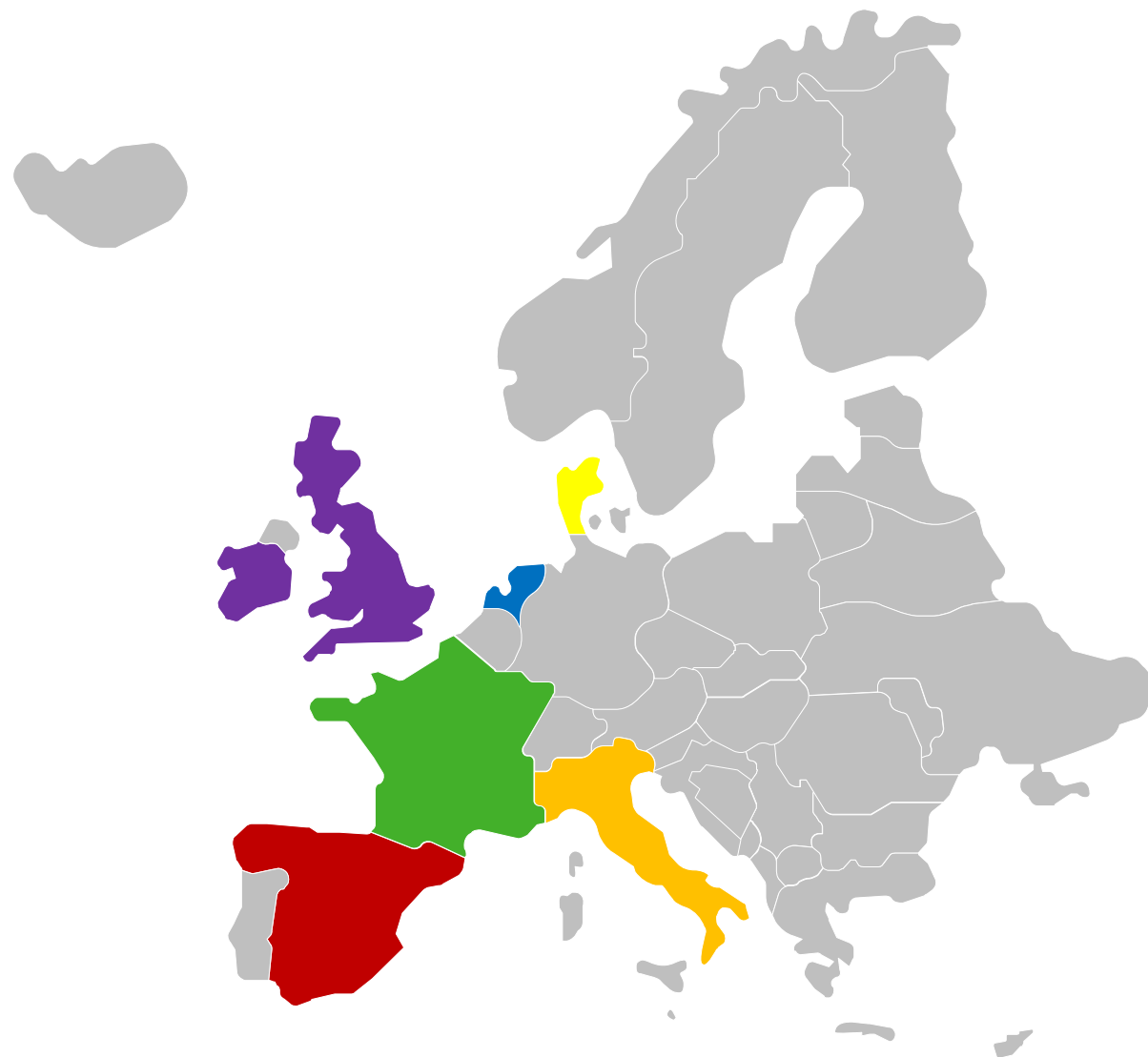
1-The overall survival for mCSPCa treated by either DOC or ABI

2-Treatment pattern for mCSPCa patients including both DOC, ABI, ENZ and APA

3- Overall survival in subgroup of mCSPCa patients that are matching patients' population in RCT's



3. Collaborations



The Netherlands ●

CAPRI foundation,
nation-wide registry in
Netherlands

~500 pts.

United Kingdom ●

King's College London
Statistical and
epidemiological support

France ●

Pitié-Salpêtrière Hospital

~50 pts.

Spain ●

Start Madrid-HM
Sanchinarro hospital

~50 pts.

Denmark ●

Vejele Hospital, University
Hospital of Southern
Denmark.

~350 pts.

Italy ●

- Fondazione IRCCS
Istituto Nazionale dei
Tumori

~40 pts.

- Azienda Ospedaliera
SS Antonio e Biagio e
Cesare Arrigo di
Alessandria.

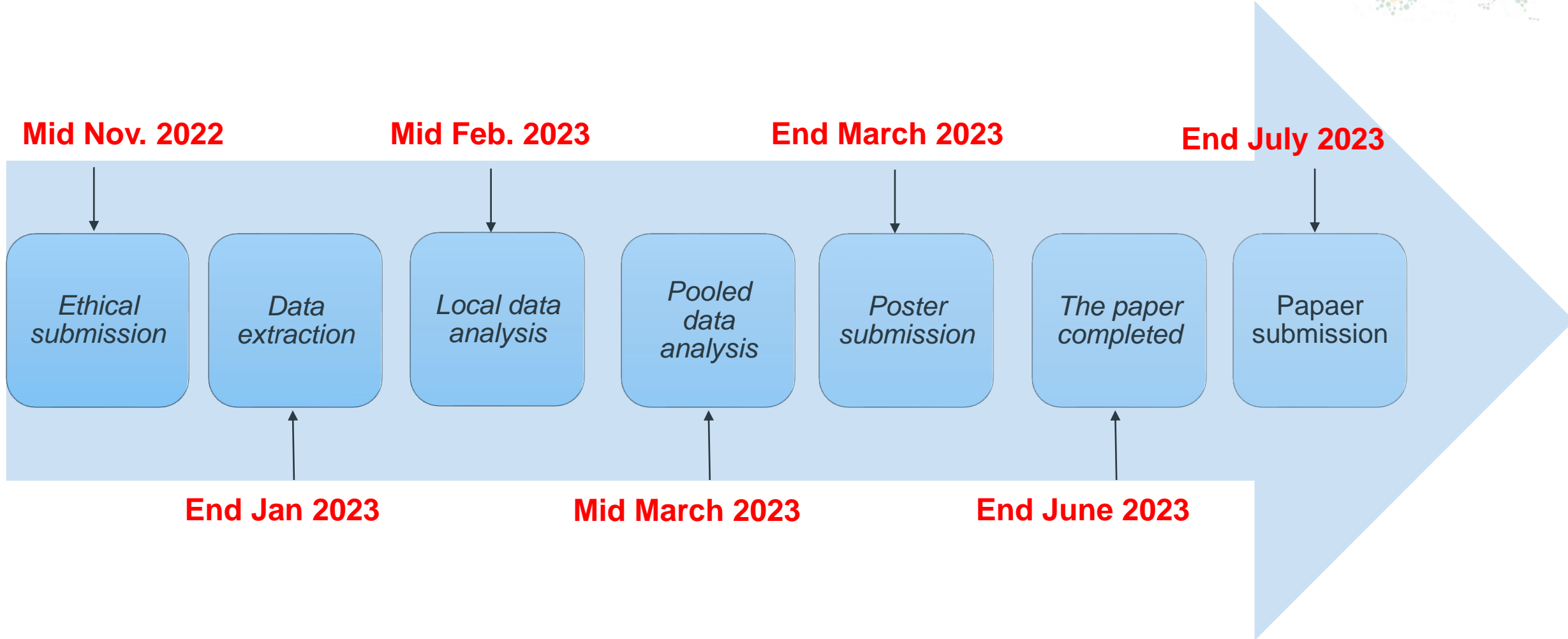
~20 pts.



4. Study design

- Retrospective, observational cohort
- About 1,010 mCSPCa patients
- DOC, ABI, ENZ and APA
- Jan. 2016 - Jan. 2022
- EMRs data
- CDM
- Data analysis :
 1. Site-specific data will be analyzed locally
 2. Aggregated results will be pooled
- Narrative comparison for a subgroup analysis

5. Study plan



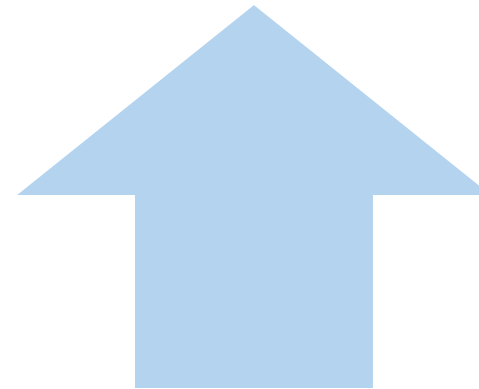
Opportunities / Challenges



- Cohort size from each site
- Different practice
- Data access



- Complementary skills
- Design enrichment
- Larger volume
- Strengthen network





Thank you